



IX-SIG APNIC19 JPNAP update

2005-02-24

Internet Multifeed Co.
Toshinori Ishii

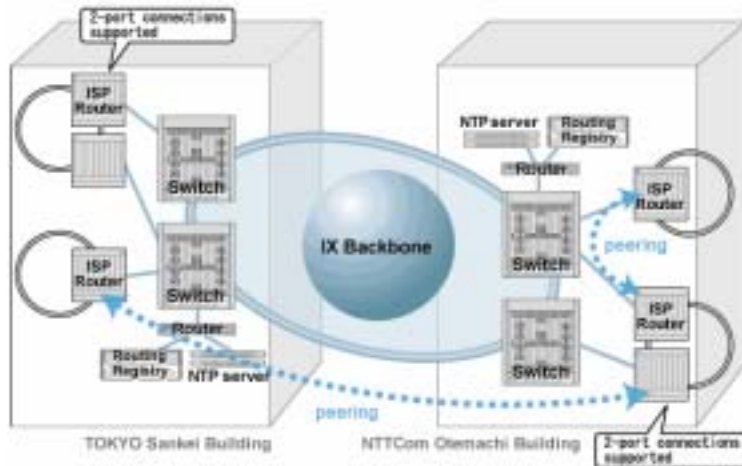
<http://www.jpnap.net/english/>

JPNAP Update

- Topics
 - JPNAP overview
 - Recent traffic growth
 - 10GE at JPNAP
 - Optical switching
 - sFlow
 - Other news

JPNAP Overview

- One of the biggest IXs in the world
 - Located Tokyo and Osaka, Japan
 - Traffic volume is tremendously high
 - Total 60G+
 - JPNAP6 (IPv6) is also provided

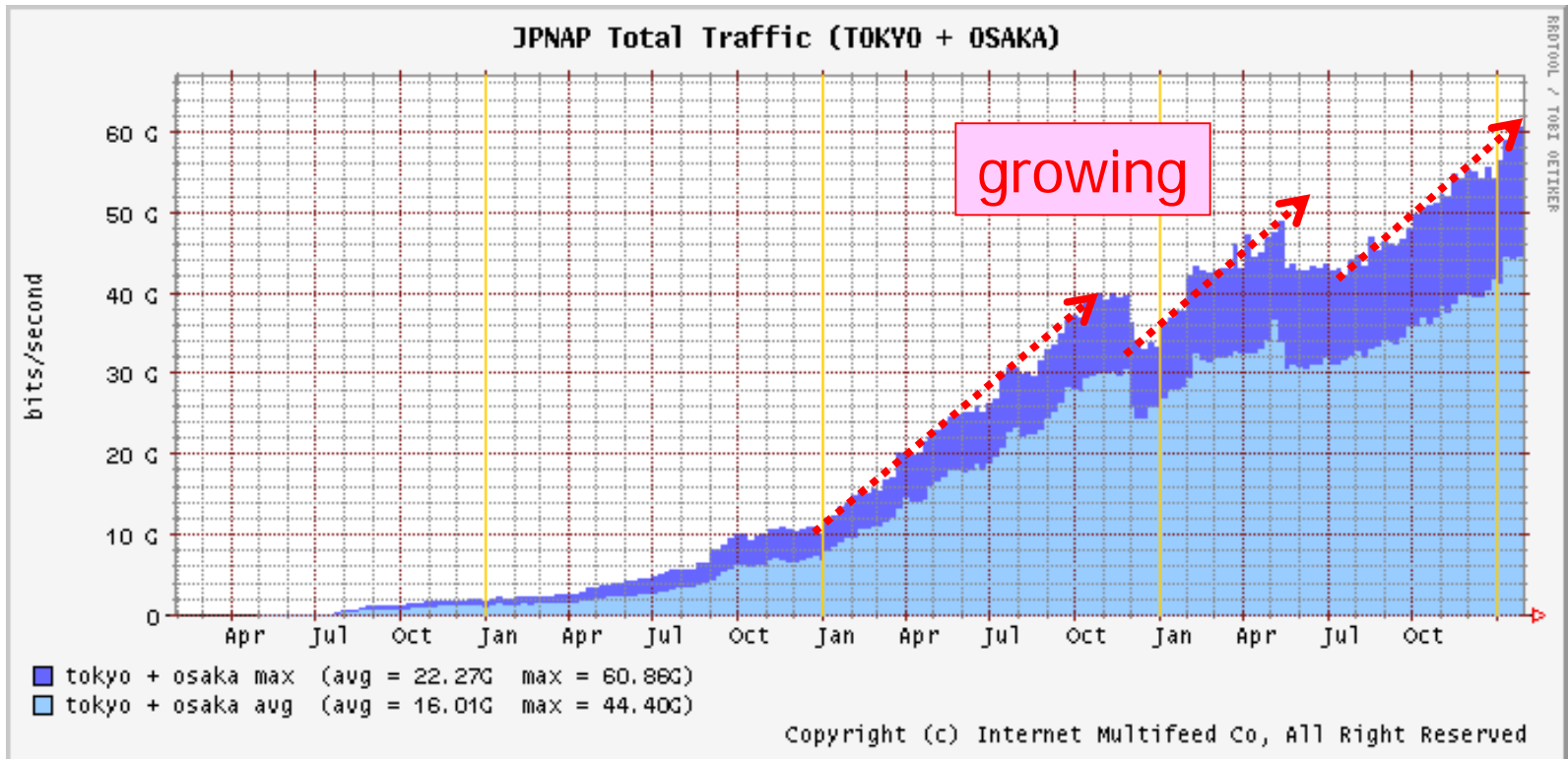


Tokyo site image



Recent Traffic Growth

- In long term, JPNAP total traffic among Tokyo and Osaka is still growing.



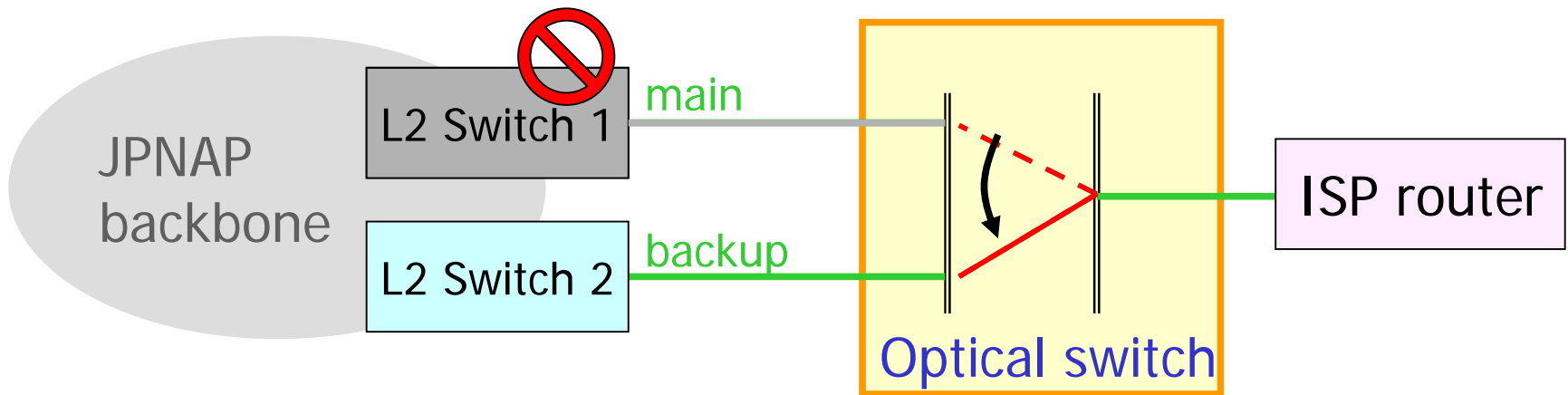
10GE at JPNAP

- Many users are already using 10GE
 - # of connected 10GE ports ... about 20 ports
 - Interoperability between 10GE equipments
 - Almost no problem

- Recent Trends:
 - 1, ISPs migrate from multiple GbE links to one 10GE link.
 - 2, Some major ISPs start to use multiple 10GE links.

Optical Switching

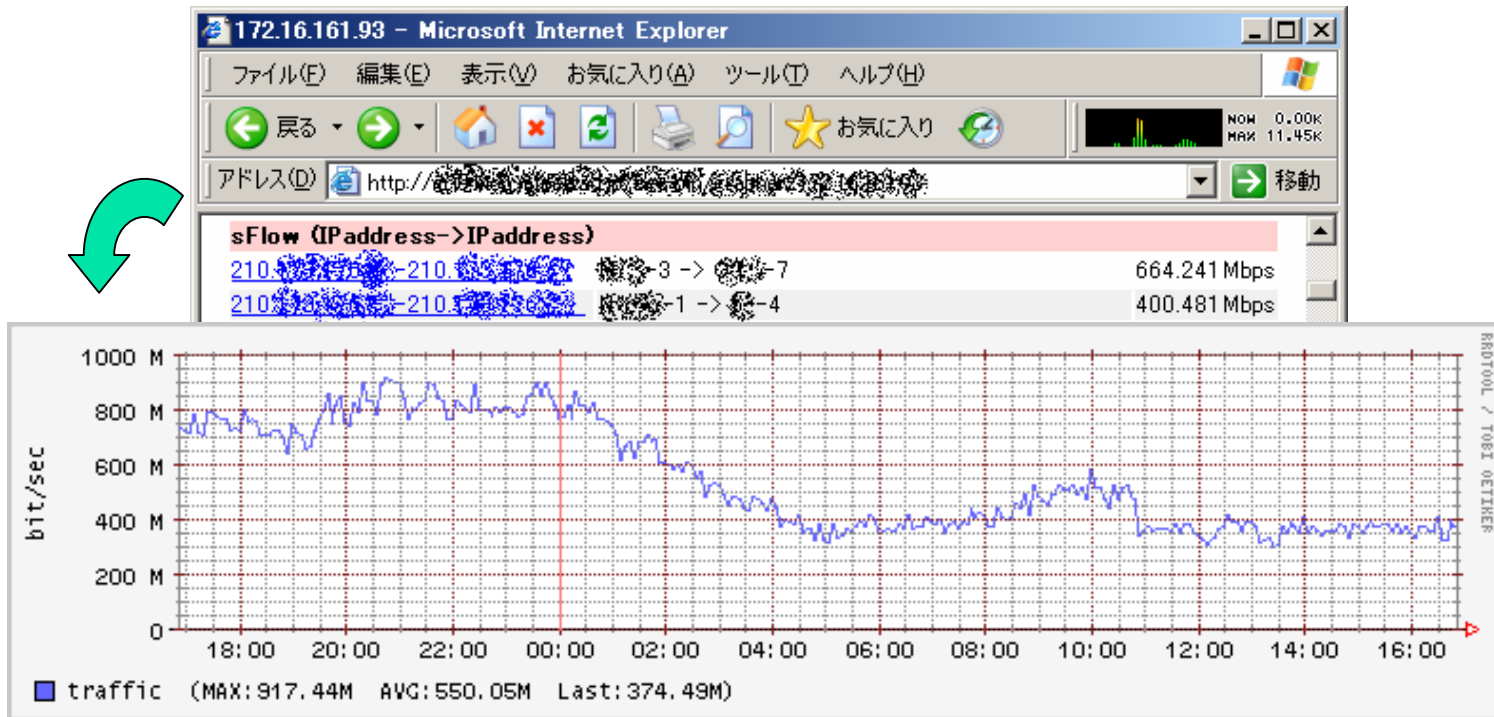
- Detecting failure and automatically switch to backup system by optical monitoring.



- It takes less than 10ms to switch
 - ISP routers will not detect "Link down".
- Power failure of optical switch makes no impact for communication between IX and ISP router.

sFlow

- Traffic Engineering using sFlow
 - For traffic engineering of JPNAP backbone



- Plan to disclose router-to-router traffic statistics for JPNAP customers. (2005 YQ2)

Other News

- JPNAP becomes 1st Euro-IX associate member
<http://www.jpnap.net/english/jpnap/press/20050216e.html>
- Any comments?
- Thank you!