

RIPE NCC Update



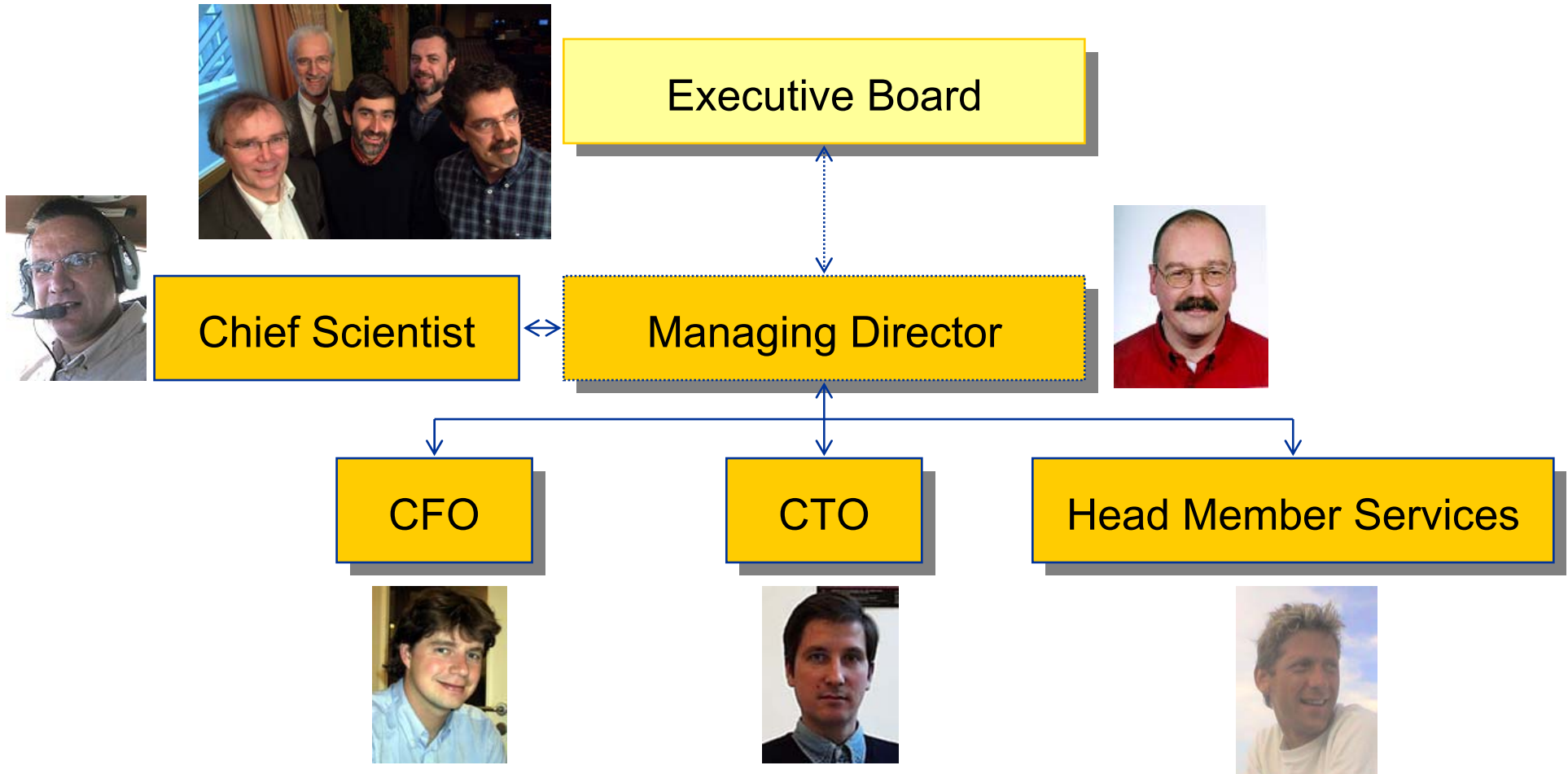
“Dried in the Netherlands and record low water positions”

- [\(links\)](#) In de Rijn een [his](#) gemeten. Hoogte waterstand laag waterstand deel bepaald bepaald door [droogte in Z](#) toekomstig zomerdroogte niet maar een toename de zomerneerslag van mogelijk 20%. (zie ook [watertekorten in waterrijk Nederland](#) en de [droogtestudie](#))
- 
- A photograph of a dark wooden sailing ship, possibly a galleon or a similar historical vessel, resting on a dry, sandy beach. The ship is positioned in the center of the frame, with its mast and rigging visible. The background shows a clear blue sky and a flat horizon line, suggesting a coastal or estuarine environment. The water is very low, exposing the sandy shore.



Who Is Who

An Organisational Update





Registration Services

- Steady response time to resource requests
 - 2 days or less for last year
- Improving resolution times
 - 90% within 8 days
- Telephone contact
 - Call back service
 - Proactive telephone calls



Policy Update

- New Address Policy WG
 - LIR-WG split into 2 new WGs and mailing lists
- Updated IPv4 document (draft)
 - <http://www.ripe.net/ripe/draft-documents/ipv4-policies.html>
- Update to “status:” attribute (values)
 - <http://www.ripe.net/ripe/draft-documents/status-attributes.html>
 - Will develop proposal in co-operation with APNIC



LIR Portal

- Membership service
- Simplified resource request forms
 - Calculating forms
 - Interactive help function
- Allocation Editor
 - Lets LIRs update allocation inetnum objects directly
- PKI login
 - Secure certificate
- Tools
 - Useful utilities

<https://lirportal.ripe.net/>



k Root Developments

- AMS-IX instance of k.root-servers.net online
 - Proof of concept complete
 - Marks the beginning of anycast k root service
- Investigating next phase
 - Deployment of more instances
- k.root-servers.org website updated with more routing policy information



Membership Liaison

- Membership Liaison Officer responsibilities:
 - Liaison activities and regional support for RIPE NCC members
 - Developing communication channels for member feedback
 - Improving interaction between RIPE NCC and members
- Projects:
 - RIPE NCC regional meeting in the Middle East
 - Dubai, UAE, 7-9 December 2003
 - Actively seek input from members
 - [<contact@ripe.net>](mailto:contact@ripe.net)
 - Support for RIPE NCC Services WG & RIPE Meetings
 - Collaboration with RIRs on membership issues



Information Services

- RIPE NCC has been collecting data since its inception
 - Hostcount, TTM, RIS, ...
- 10 years, time to revisit and adjust direction
- Strategy paper: RIPE 271, “RIPE NCC Hostcount in the 21st century”:
 - Measurements are necessary for long and short term operations
 - RIPE NCC is ideally suited to do them
 - Results should be made public
 - Results should be easy to use in daily operations



Changes in the coming months

- Central entry point for all statistics maintained by the RIPE NCC
 - Uniform data formats
 - Consistent
- myASN feature added to the RIS
- TTM will become an open service
- DNS monitoring added
- Incident response procedure and team

Suggestions and ideas: tt-wg@ripe.net



X.509 for RIPE NCC LIRs

- LIRs get client certificates from LIR Portal
- LIR Portal login with certificate
- Database updates pending
 - S/MIME e-mail update authentication
 - SSL synchronous and web update authentication
- Wizard for adding X.509 auth to mntners coming
- Interaction with RIPE NCC hostmasters Q4 2003



RIPE Database Developments

- New update program
 - Improved acknowledgment messages
- Unreferenced person object auto-cleanup in place
 - Began 29 May 2003
 - Steady deletions, drop from 300k to 200k objects
- RPSLng (RPSL for IPv6 and multicast)
 - Prototypes running, not yet IETF standard
 - Client and server source code also available



Association News

- Membership developments surpassing expectations
- Increase number of Billing Categories
 - XS, S, M, L, XL
- AoA changes proposed
 - To increase flexibility
 - Voting rights
- GM at RIPE 46
- Budget 2004
 - Stable
 - FTE stable at ~ 93, less than budgeted for 2003, increasing services / service levels

RIPE 46

- Amsterdam, 1-5 September

